

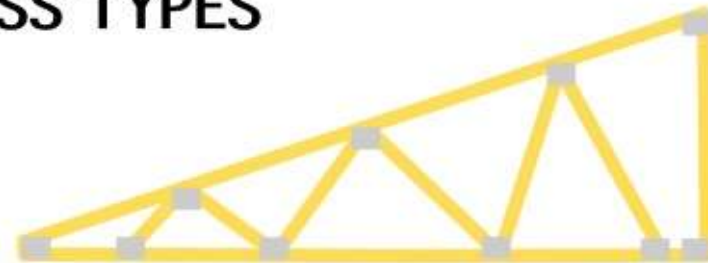
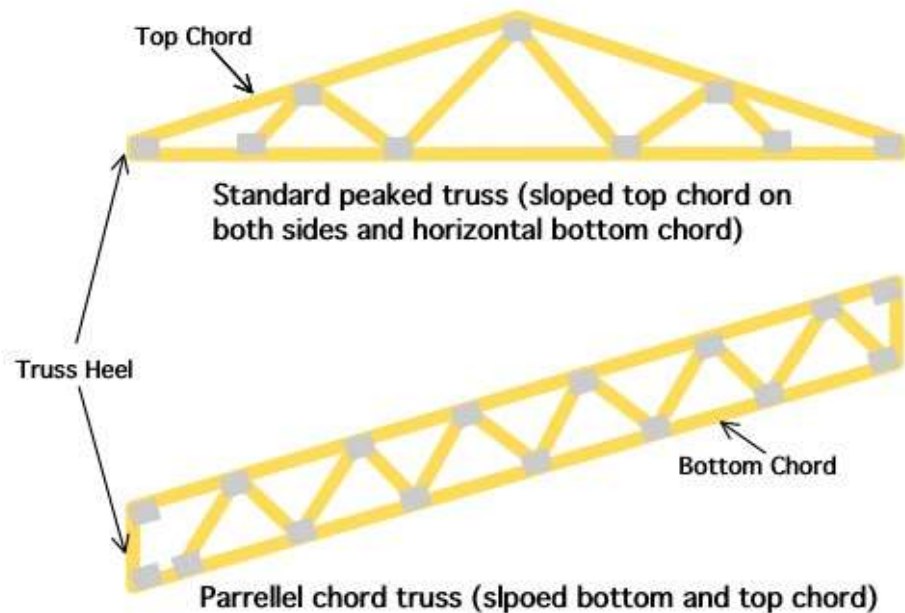
**STANDARD TRUSS LOADING**

25# Snow load on top chord

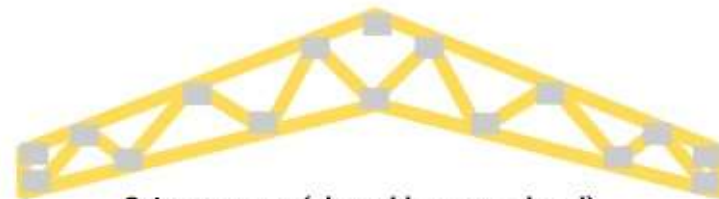
4# Dead load on top chord (framing members & roofing)

1# Dead load on bottom chord (minimal framing members)

## COMMON TRUSS TYPES



Mono truss (sloped top chord with horizontal bottom chord)



Scissor truss (sloped bottom chord)  
Typically 4/12 over 2/12 but can vary



Gambrel Truss ( 2 different slopes to top chord)

**KEY TERMS:**

Top chord - Ttop member of truss

Bottom chord - Bottom member of truss

Snow load - Variable weight sitting on top of truss at different times

Dead load - Dead weight sitting on truss at all times (perlins, roofing, vapour barrier, sloar panels)

Dead load relates to both bottom and top chords

Cieling load - Increasing bottom chord dead load to accomodate a cieling framed off of it

Heel Height - Truss heel heights vary by truss type, snow load,dead load and width